



National Environmental Science Program

AdaptLog v3.0: The Adaptation Catalogue for Conservation User Guide, November 2024

adapt-log.csiro.au

The Adaptation Catalogue for Conservation is a key output from our NESP-funded research project, *'Climate-effective management for threatened species and protected places'*.

We acknowledge the generous time given by dozens of beta-testers to the development of AdaptLog throughout 2023 and 2024. Beta-testers contributed end-user perspectives, use cases, testing of performance and utility, and addition of missing interventions.

In this guide, you should find everything you need to explore, test, and evaluate version 3 of this product. If anything is unclear or you have any questions, please email Alistair.Hobday@csiro.au.

About AdaptLog

The Adaptation Catalogue for Conservation (AdaptLog) contains interventions that explicitly consider climate change. A climate adaptation intervention is a conservation activity targeting management of species or ecological communities that specifically address climate change vulnerability and/or incorporate climate information.

We have collated this information from publicly available sources via:

- ad hoc and formal searching since 2018 until mid-2024
- a scan of recovery documents to extract implemented or suggested actions for the [TSAP Priority Species list](#)
- conversations with conservation practitioners around Australia

Additional interventions are constantly being encountered and recorded to be included in the next release. We hope AdaptLog can be a useful resource to access and understand information on a wide range of options and inspire novel and transformative approaches to conservation under rapid climate change.

Who might use AdaptLog?

The target audience of this online database is people in conservation who are implementing climate adaptation interventions to help species, ecological communities and protected places adapt to climate change.

What to expect in using AdaptLog?

Our focus in collating these interventions has been on-ground, active interventions but we also recognise that planning, policy and threat-abatement with a climate-lens are equally important for climate adaptation. To display the range of conservation activities that contribute to climate adaptation see Figure 1 below. Ideally, we want AdaptLog to highlight conservation activities at the ‘pointy end’; the conservation actions that directly and explicitly consider climate change. We have focused on these types of activities because, in general, this approach to conservation is less established and has fewer on-ground examples of implementation. However, due to activities across this spectrum being important to resilience and adaptation to climate change, you will see examples from across the spectrum in AdaptLog.

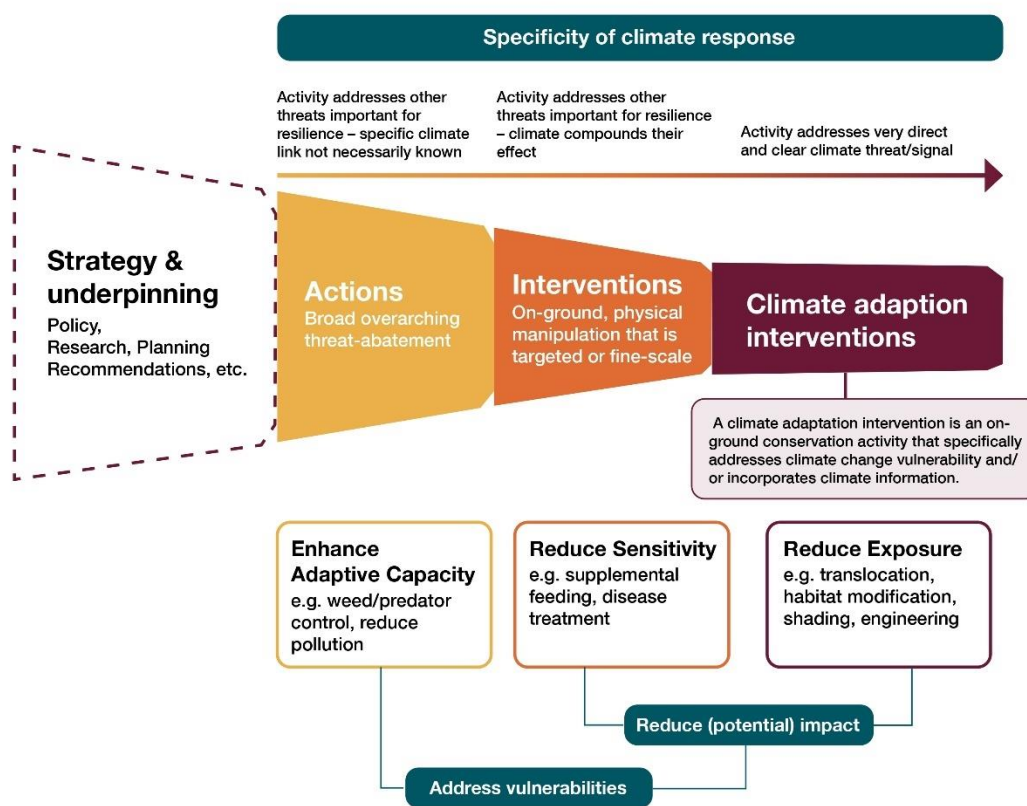


Figure 1. A continuum of different types of conservation activities that can help adaptation for species and ecological communities. Conservation activities contributing to climate adaptation range from overarching ‘desk-based’ planning and policy actions (left side), well-established and broad conservation actions (middle), to more specific interventions directly linked to climate change and extreme events (right side).

AdaptLog is not an exhaustive resource on each intervention, but as starting point where you can find out the main details and dive deeper through further research on any that interest you. The emphasis is encouraging people to think innovatively and consider adopting approaches from different places and contexts, not showing you what has happened for your study species in your backyard.

We do not expect the interventions included in AdaptLog to be comprehensive, rather, we have tried to capture a variety of examples to help stimulate thinking about options and inform transitions to new approaches to conservation under climate change.

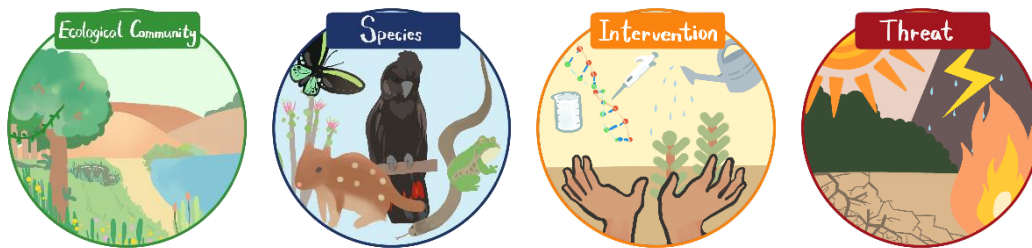
How to use AdaptLog

To start your search, click on this area:



Continue by selecting your entry point. Are you interested in a species, an ecological community, a particular type of intervention or a climate hazard or threat?

Glossaries can be found here: adapt-log.csiro.au/about



While perusing the search results, you can click the “i” symbol on the right side of the search results table to find out more information about a particular intervention.



When looking at the detailed page on any intervention, you can download the page as a PDF document by clicking the green “Download as PDF” button, under the map.

Download as PDF

To access further details on the decision support materials, visit the ‘About’ page in the top left corner of the webpage and navigate between the grey tabs to explore the User Guide, Glossaries, Consideration Wheels, and Points to Ponder. You can also click on the relevant areas of the home page:



Providing feedback

We welcome your feedback via return email on the contents and functions of AdaptLog v2.0: Alistair.Hobday@csiro.au. We ask you to please share with us anything that was confusing or unclear in the presentation of AdaptLog.

We also ask you to share your own adaptation interventions and stories with the project team to include in AdaptLog. This will help progress this field of conservation practice. We hope this will facilitate practitioners learning from the successes and failures of other interventions and will seed productive collaborations. You can add links and basic information of relevant projects/interventions to the following form: <https://forms.office.com/r/r6HgZpDh15>. This will only take 2 minutes to complete.

Other places to explore

AdaptLog is not exhaustive, and we suggest you explore the sources below to complement your search for approaches to conservation in an era of rapid climate change:

- Short webpage summaries of projects supported by the Wildlife Conservation Society Climate Adaptation Fund: <https://www.wcsclimateadaptationfund.org/supported-projects-1>
- More than 100 examples of land managers across the US considering climate change: <https://forestadaptation.org/adapt/demonstration-projects>
- A repository of evidence for conservation interventions: <https://www.conservationevidence.com/>
- Adaptation Stocktake for Australia - all sectors: <https://nesp2climate.com.au/resource/conducting-australias-first-adaptation-stocktake>

Please cite AdaptLog as: Mason, Claire; Hartog, Jason; & NESP 2.7 AdaptLog Core Team (2024): Adaptation Catalogue for Conservation (AdaptLog). CSIRO. Service Collection. <http://hdl.handle.net/102.100.100/614570?index=1>

Please cite decision support documentation for AdaptLog as: Mason, Claire; Hartog, Jason; Boulter, Sarah; Hobday, Alistair; Melbourne-Thomas, Jess; Styger, Jenny; & van Putten, Ingrid (2024): Decision support documentation for AdaptLog. CSIRO. Service Collection. <http://hdl.handle.net/102.100.100/659364?index=1>

Thank you for your contribution to the future of climate-effective conservation in Australia!

This project is supported with funding from the Australian Government under the National Environmental Science Program.

